



News from Alaska EXCEL

First Quarter of the 2020-2021 School Year!

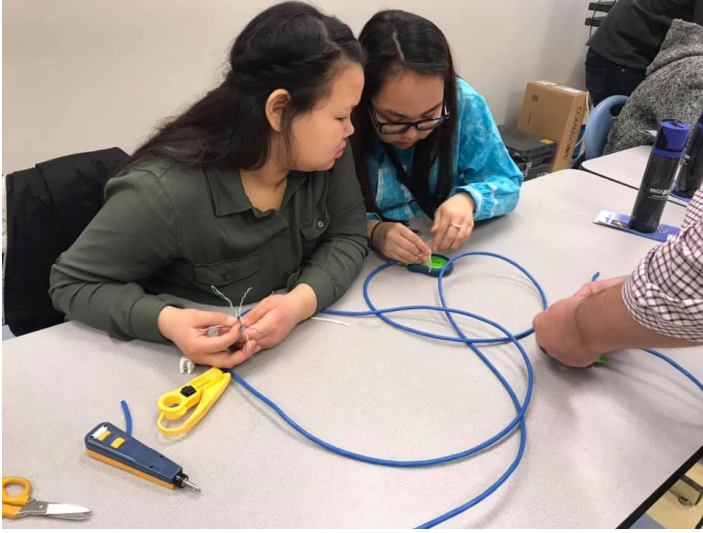
This fall has been filled with challenges for all - large organizations down to the individuals who run them. The world as we know it has changed. We are finding our own silver linings and one of them is YOU! You care about rural Alaskan students and you believe in the work Alaska EXCEL does to add to their educational experiences.

THANK YOU!

Thank you for caring about the underserved students of rural Alaska and believing in Alaska EXCEL and the work we do.

This year we will be running a "*Pay It Forward*" campaign. In the following months we will introduce you to several students. Each one has a different career goal for their life and with your help, each one can realize their goal.

Just this week we have been added to the Amazon Smile charitable giving campaign. You can set it up in your Amazon account and every time you purchase something, EXCEL gets a donation from Amazon - no cost to you!
To set your Amazon account up to



benefit Alaska EXCEL, click [here](#).

Additionally, look for other fund raising opportunities to help Alaska EXCEL, including *PICK*, *CLICK*, *GIVE*. We have an account with **Office Max/Office Depot** (our school ID number is **70242350** if the sales associate can't find it by the name). As with Amazon Smile, a percent of your purchase will be awarded to EXCEL, through their corporate giving campaign, at no additional expense to you. We've already reaped the benefits of this program. Thank you!

Donate Here!

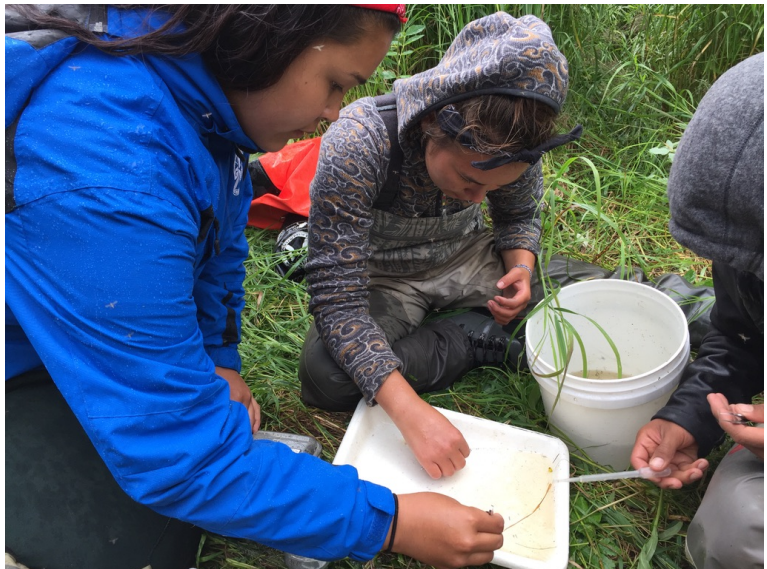
Did you know? We are still providing services for our students through a variety of online options!

GRI

Because you care about education for rural Alaskan students, we were able to show nine students part of a fish biologist's job.

The Kuspuk School District showed so much interest in the George River Internship (GRI), we were able to hold the GRI. Staff flew in ahead of time to make the mandatory quarantine prior to the trip. Students were very grateful to be able to go ahead with plans made some time ago!

The ability to work as part of a team, accuracy of work, technology usage, communication, applying what is learn, safety-conscious and more are all employability skills. Students who have been to other EXCEL sessions have learned these soft skills and are useful at the GRI. Students must be able to work together, to be safety-minded, and to be able to apply what they have learned.



Partnering with the Alaska Department of Fish & Game, students are collecting data on the habitat and numbers of chinook salmon on the tributaries of the Kuskokwim River. In this case, particularly the George River. The GRI is a 10-year ecological study of the George River. Students process various reference sites and compare the data gathered to years past. 2020 concluded year 5 of the 10-year study. A completely processed reference site includes:

- Macroinvertebrates
- Depletion/Abundance

- Cross Section Profile
- River Velocity and Discharge
- Wolman Pebble Count
- Riffle Stability
- Water Quality

Thank you for making the GRI possible for students in the Kuspuk School District.

Did you know? Kuskokwim and tributaries weir data can be viewed at the [ADF&G site](#).

Great Alaska Duck Race

Because of your interest in the Great Alaska Duck Race, Mucks were mailed out to all corners of Alaska and to several sites in the Lower 48 states! Thank you for your interest and support!



The 2nd Annual Great Alaska Duck Race is now a page in the history books. It was a very fun, very inspirational event. It provided us the opportunity not only to fund raise for ourselves, but to help 9 other non-profits in the process!

Great Alaska Duck Race partners this year included Alaska SeaLife Center, Arctic Education Foundation, Anchorage Hockey Association, Bean's Café, Scotty Gomez Foundation, AK Firecrackers Fastpitch Softball Organization, Anchorage Opera, Anchorage Chamber of Commerce, Anchorage Downtown Community Council, and Wasilla Youth Soccer Association.

A HUGE thank you to all our sponsors; Alaska Chadux Corporation, Alaska Railroad, Alcan Electrical & Engineering, Inc., Conoco Phillips, The Bait Shack, Beacon OHSS, Inc., and Jensen Hall Creative!

We've got great plans for next year to make the event even bigger and better. We're excited to be building this wonderful, family-friendly event and to create an event to rival the Nenana Ice Classic!

Thank you so much to all of you who purchased tickets, helped with the event, and attended!

Did you know? The first rubber duck race allegedly took place in Strathalbyn, South Australia 40 years ago!

EXCEL Tutoring in Anchorage

Because you care about students, we have been able to assist working parents and offer an educational day camp for their children.

This fall we offered tutoring to students enrolled in the Anchorage School District. Hoping to help working parents whose children are in grades one through eight, EXCEL held classes here at our site, five days a week from 9:00 am to 4:00 pm. Students logged into their online classes with their classroom teachers and were tutored by EXCEL staff when the online lessons were over. In addition to the academic encouragement, students were treated to arts, such as mask making (photo right), health, and physical education classes. Each day was concluded by an exciting story read by our one and only, Marquis!



Did you know? The phrase "Keep Calm and Carry On" was originally used by the British at the onset of World War II. It was written on posters to boost morale and mentally prepare its civilians. A great phrase for today's times.

Alaska EXCEL Outreach

Because of your support, EXCEL staff is teaching an online career exploration course for our rural students.

In anticipation of our classes getting cancelled in this fall, EXCEL staff jumped ahead of the game and is teaching an online *Career Exploration* class. Utilizing mostly



instructional techniques available to students at the times of their choosing (asynchronous, online classes), the curriculum covers a variety of subjects. Employability skills, safety, and leadership are embedded throughout the course. Exploration in the specific areas of *Careers in Health Care, Construction Careers, Aviation Careers,* and

Careers in Law Enforcement, each span two weeks. Students who successfully complete the class will earn .5 high school elective credit.

We are continuing to host our very popular Facebook Live events (reaching 41,406 people and engaged 9,138) with Motivational Monday, Wellness Wednesday, and Formative Friday. Some of the topics covered to name a few:

- Workouts (full body, upper torso, abs, etc)
- Healthy living (dietary choices and mental wellness techniques)
- Check-ins with industry leaders, Alaska Department of Labor & Workforce Development, and Native Corporations
- Reports from former students
- Advice and information from successful cultural representatives

You can view these from our Facebook page in [videos](#).

Did you know? 57 students from several different villages signed up for the online Career Exploration class and more districts are inviting their students to participate as well!

Alaska EXCEL Board of Directors

Executive Board:

- Board Chair - Colin Stewart - Lower Kuskokwim School District
- Vice Chair - Brenda Pacarro - Calista Corporation
- Secretary/Treasurer - Sam Hill - Arctic Slope Regional Corporation
- Member-at-Large - P.J. Simon - Doyon Limited
- Member-at-Large - Wayne Morgan - Aniak Traditional Council

Advisory Board:

- Meg Smith - Donlin Gold, LLC
- Patty Woody - Yukon-Koyukuk School District
- Sam Robert Brice - Bilista Holding, LLC
- Susan Hoeldt - Yukon Kuskokwim Health Corporation

Find out more about Alaska EXCEL by visiting our [website](#).



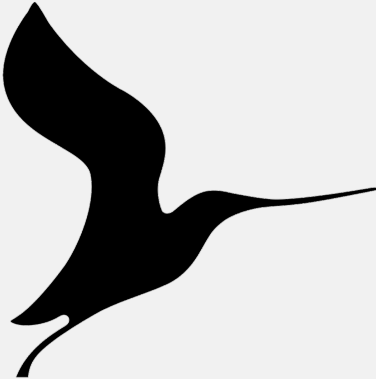
Recommend us on Facebook



See us on Instagram



Donate through Square



Purpose: Education for Life

Core Values: Student-Centered (what we do is about our students), Experience (learning by doing), Relevance (connect learning to life), Loyalty (we are always there for our students and our partners)

Vision: By 2040, Alaska EXCEL will be the standard for success in experience-based learning